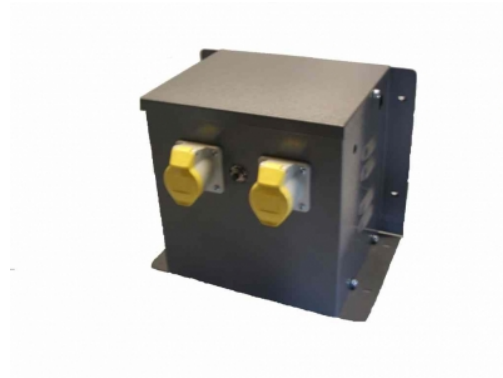


Datasheet for: WT3351PT

Product Type: Low Cost 110v Workshop Transformers

3300VA (Continuous 1650VA) 230v to 110v CTE with Two 16amp 110v socket



VA	3300
Input Voltage	230
Input Termination	Screw Terminals
amps	13.6
Output Voltage	110
Output Termination	Two 16A 110v yellow socket
Product Case	P3 Industrial floor/wall mounting case IP23
Dimension	Ht:244 W:177 L:270
Weight	14kg
Primary Protection	Push to reset circuit breaker SP10 12A
Surge Protection	SL32 Surge Limitor
Product Type	Safety Isolating transformer Conforms to EN61558-2-23 CE & RoHS
Regulation	0.04

Commodity code: 851539130

RoHS Certificate: Airlink Transformers certifies and testifies that all the products and goods delivered and invoiced, do not contain any of the hazardous substances as mentioned in the 2011/65/EU European directives (RoHS). Particularly these products do not contain: Heavy metals such as Pb, Cd, Cr6+ Bifenil Polybromurate (PBB) Etere Difenil Polybromurate (PEDE)



Declaration of Conformity: Airlink Transformers declare that the product CM:0500250 500va 230v to 2x50v Chassis mounted transformer conforms to current European safety and EMC regulation EN61558-2-6 (Safety Isolating transformer) CE & RoHS compliant. Manufactured to Class A 105degC.

Declaration by the Exporter: The exporter of the product covered by this document declares that these products are of EU preferential origin.
22/09/2019

